



# TorqX

## Firmware Upgrade How-to (Using jumper method)

### **Version 2030**

[Patriot Torqx Firmware Revision no. 5]

#### Document History

Revision	Release Date	Purpose & Change
1.0	July 21, 2010	Initial Release

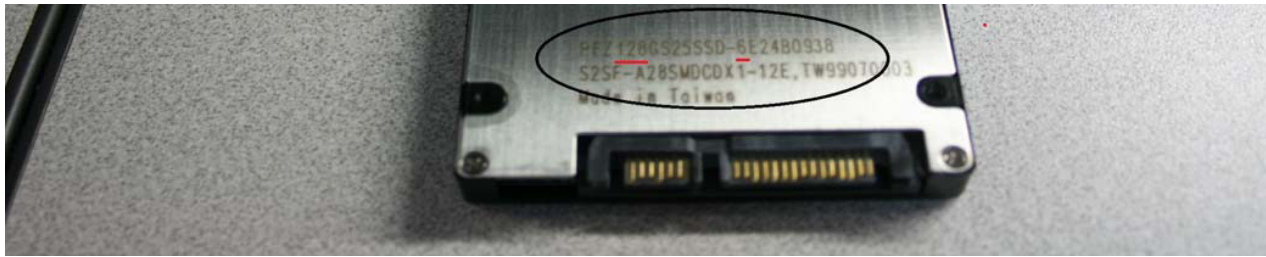
## IMPORTANT NOTES:

- a. This update will **only** work for Patriot Torqx drives (non M28 version). Patriot Memory is not responsible for any damage to any other Patriot SSD Drive (i.e.; Patriot Torqx M28, Patriot Warp, Patriot Inferno, Patriot PS-100, Patriot Zephyr), or any other hard drive.
- b. The F/W upgrade program works in Windows XP, Vista® and Windows 7 only.
- c. **All SSD data on the drive will be fully erased.** Please back up data on the drive to another source before beginning the upgrade.
- d. The F/W upgrade program cannot work within the O.S boot drive and must be done as a secondary drive.
- e. For best results, disable AHCI and use the SATA Ports 1 or 2. The F/W upgrade program will not work on an AHCI/SCSI/RAID/PATA to SATA Bridge Host Controller.
- f. Each capacity of Patriot Torqx has its own set of files. Please make sure to download and use the files that match the capacity of your drive (i.e. 64GB, 128GB and 256GB) and beginning character of the lot code (2 or 6) for your drive.

To locate the correct capacity and lot code for your drive, look at the bottom side of the drive and locate the Patriot Model Number beginning with 'PFZ'...



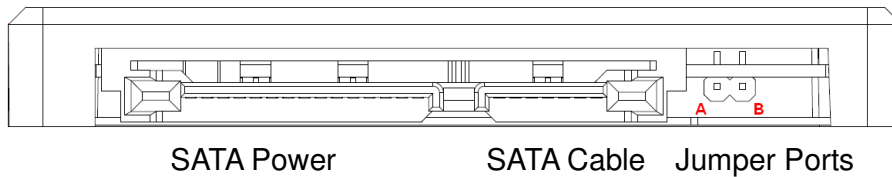
The 4th character after 'PFZ' before 'GS25SSD' represents the capacity of the drive in value of Gigabytes. The lot code follows the (-) after the Patriot Model Number.



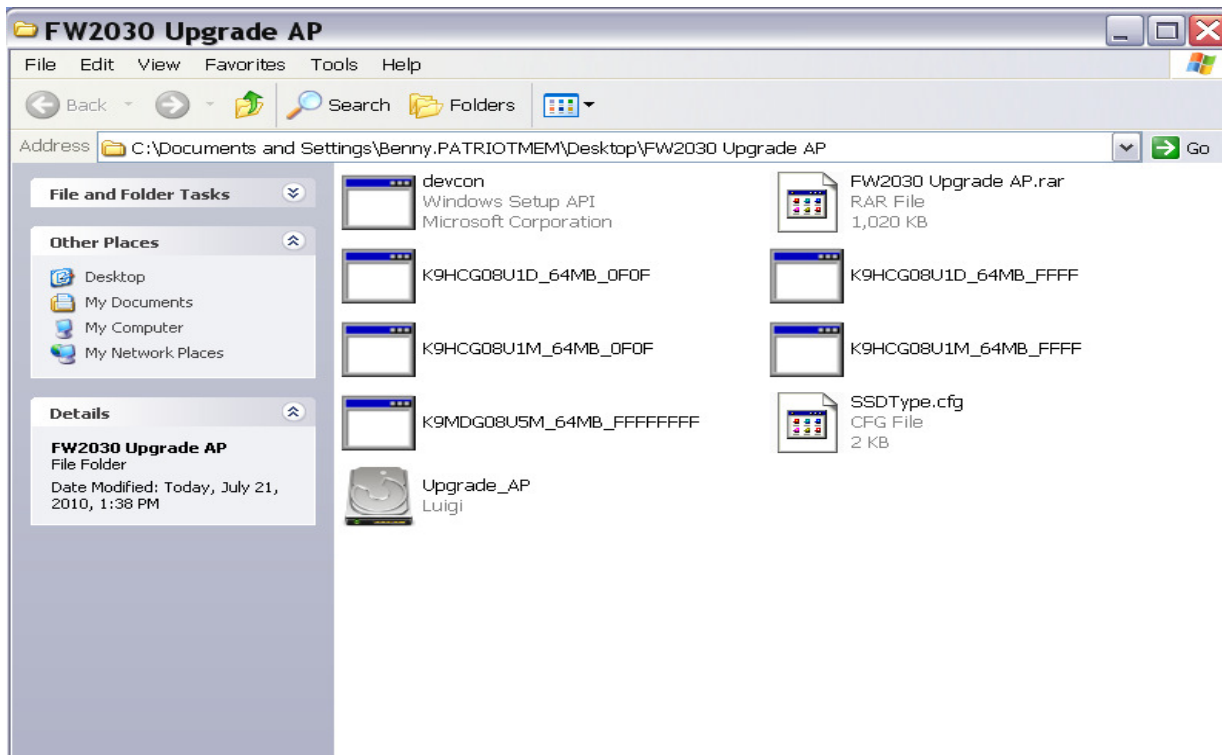
Make a note of the part number for step 4 listed below.

### F/W Upgrade Procedure for SATA SSD:

**Step1.** To prepare the SSD back to factory default mode; Power off your computer, **DO NOT** plug in the SATA cable yet. Plug in the jumper to short A-B to begin F/W upgrade. After the jumper is installed, you may now plug in the SATA cable and cord to the motherboard.



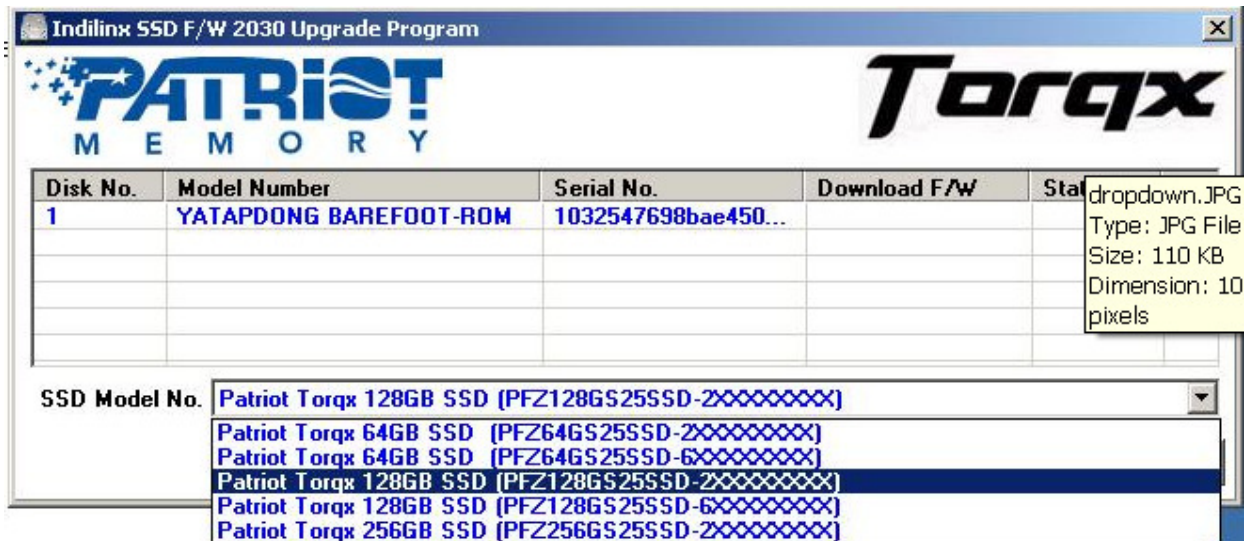
**Step2.** Extract the contents of the FW1916 Upgrade AP.RAR file. (Note: You may need a file extraction utility program such as Winrar). Once this file is extracted, there will be 8 files total; devcon.exe, (5) K9.exe files, an SSDType.cfg file, and an Upgrade\_AP.exe file.



**Step3.** Run “Upgrade\_AP” application and a dropdown box will appear.

(Note: **For Vista or Windows 7** the user account control might need to be turned off, right click and run as administrator)

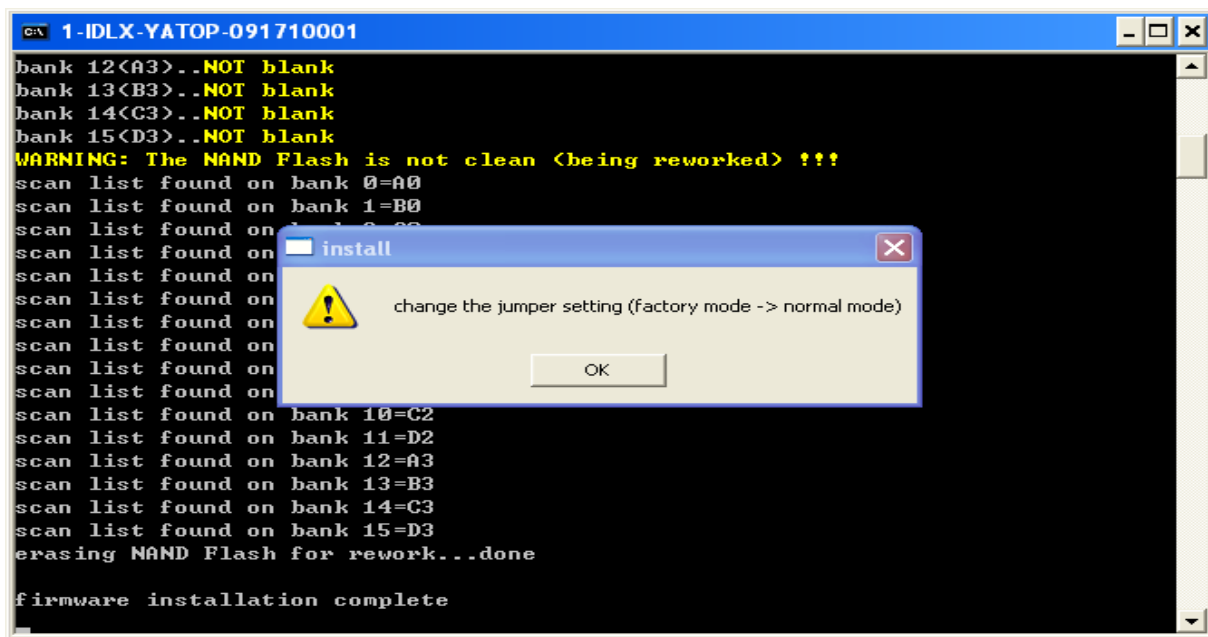
The ‘Indilinx SSD F/W 2030 Upgrade Program’ prompt will open. SSD Model No. and a dropdown box will appear...



**Step4.** Select the drop down menu for the SSD model number. Select the file that applies to your drive. (Refer to “Important Notes” on Page 2 and 3 – Section F)

Once you select the correct drive, the firmware update will begin.

**Step5.** If the firmware upgrade is successful, there will be one final message displayed. Click “OK” to exit the program. Please power off your computer and remove the jumper.\_



If any problems occur during the upgrade, contact [support@patriotmem.com](mailto:support@patriotmem.com) for assistance.