

PS-100

Firmware Upgrade How-to (Using as Secondary Drive)

Version 3.000

Document History

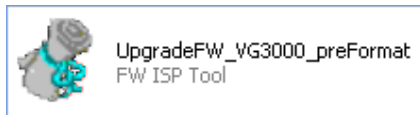
Revision	Release Date	Purpose & Change/Description
1.0	April 22, 2010	Initial Release

Important Notes:

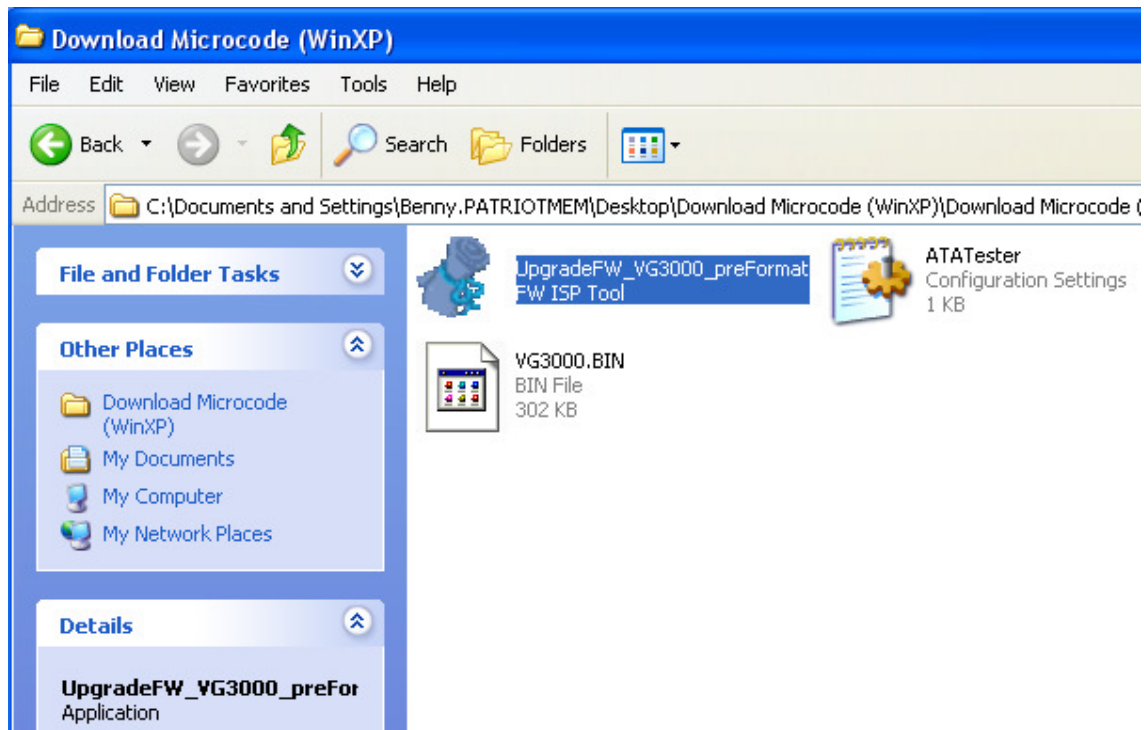
- a. **All SSD data on the drive will be fully erased.** Please back up data on the drive before beginning upgrade.
- b. The firmware requires you to run this software from another primary bootup HDD. You will need to run the desired flash, PS-100 as a secondary drive. The firmware will then boot the upgrade from the other primary boot HDD to the PS-100 SSD.
- c. It is generally recommended to run the drive in IDE or IDE enabled; however if upgrade tool fails to find the drive switch the drive to AHCI or AHCI enabled. To do so locate this in the bios. Please consult your motherboard manual for more information regarding this.

F/W Update Procedure:

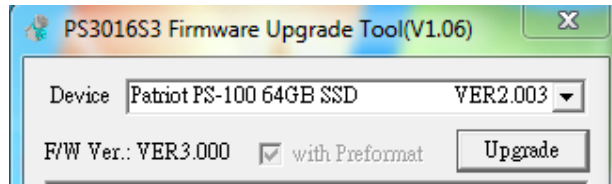
Step1. Extract the contents of the '2008 Zip file.' It should extract into a file named 'SSD_UpgradeFW_VG3000(PreFormat).'



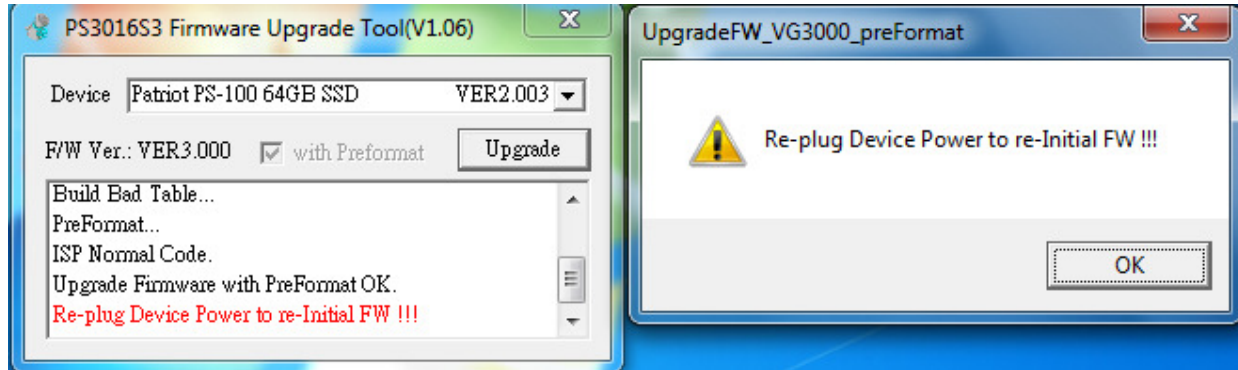
Step2. Double-click on the 'SSD_UpgradeFW_VG3000_preFormat. For Vista or Windows 7 User Control might need to be turned off.



Step3. Select the device in the dropdown box and hit 'upgrade.' The firmware update should now begin and the prompt should indicate that it is erasing all blocks...



Step4. Once the firmware upgrade completes, one final prompt will appear. Unplug the power, turn off the system and re-plug it back in. You may now use your PS-100 drive with the V.3000 firmware.



If any problems occur during the firmware upgrade, please contact support@patriotmem.com for assistance.